



BradCommunications™ SST™ DeviceNet software tools provide the support required for your DeviceNet applications.

SST™ Software Tools For DeviceNet

Features

Configuration Console

- Configure DeviceNet parameters
- Add devices automatically through network detection or manually from the device library

Network Analyzer

- Captures all valid messages
- Display and filter captured messages including timestamp, MAC ID, message group, message ID, data values and a description of message type
- Save captured messages to file
- Capture up to 100 million messages over a 46 day period
- Allows the diagnosing of messages to aid in the identifying of scanner and slave related problems

Diagnostic and Test Tools

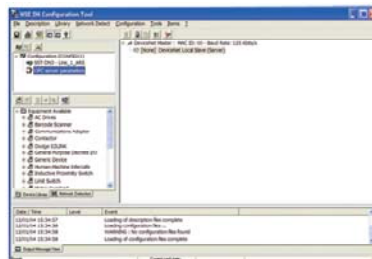
- Queries and reads current configuration without disturbing the network
- Displays information on DeviceNet network, card status, host interface memory block, device configuration, I/O data

Operating Systems Supported

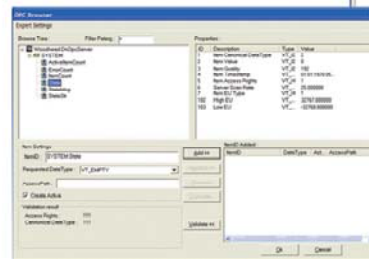
- Windows 2000 / XP



Member of the
Open DeviceNet Vendor Association



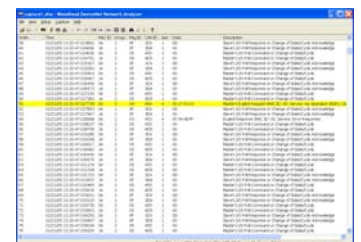
Configuration Console



OPC Browser



Diagnostic and Test Tools



Network Analyzer

Configuration Console

The following list sets out the main FUNCTIONS of the user configuration process.

1. Declaring the cards.
2. Configuring the DeviceNet parameters (Master Scanner MAC ID, Baud Rate, Scan Interval, and Reconnect Interval).
3. Adding devices, either by automatically detecting the devices on the network if the card is in the PC, or manually from the device library.
4. Setting up the devices in the configuration (Equipment ID, Active state, and connection parameters).
5. Declaring (and if necessary configuring) the data access items for the OPC server.
6. Saving the configuration

Once these steps have been performed, the card can be used by the diagnostic tool, by an OPC client or by a user application.

The Console also includes the following additional functions:

- Configuration manager. The configuration manager is used to define and use several configurations successively.
- Transferring the configuration onto a remote workstation. This function is required where the configuration console is installed on a different machine than the user application (e.g. the OPC server)
- Monitoring device status. This function is enabled when the configuration list (scan list) is placed online (online-config mode).



The **Network Analyser** is used with a SST DeviceNet interface card to capture network activity. It can perform the following functions:

- Captures the individual CAN messages on a CAN or DeviceNet network, using the 11-bit identifier as defined in the CAN specification version 2.0 part A.
- Allows for the definition of a trigger filter to specify exactly when the capture should begin, based on specific messages, communications between a client and server, or mask/match criteria.
- Provides options to define the number of messages to capture prior to, and the number of messages or time to capture following the trigger point.
- Allows for the definition of a capture filter or mask/match criteria to specify exactly what should be captured, based on specific messages between a client and server.
- Provides the ability to display and analyse the captured messages.
- Displays the timestamp, MAC ID, message group, message ID, data values, and a description of the message type associated with a DeviceNet message.
- Allows for post-filtering of the captured messages, based on specific messages, communications between a client and server, or mask/match criteria.
- Allows for searching of a specific message in the list of captured messages.
- Saves the captured messages to a capture file, or a comma delimited or fixed column width text file.
- Can capture up to 100 million messages over a period of up to 46 days.

The **Diagnostic Tool** is used with one or more SST DeviceNet interface cards to provide scanner diagnostic information and aid in the diagnosis of scanner related problems. It can perform the following functions:

- Automatically detects the devices and allows the user to go online with the detected list.
- Capable of running at the same time as other DN scanner applications that have control of the DN cards. The Diagnostic tool queries the DN cards in the computer and reads the current configuration for each of them without disturbing the other application(s).
- Loads the current network configuration generated by the Console, or an exported Console XML configuration file, and uses it to configure the DN cards in the computer.
- Displays information regarding the DN network, including the status of the scanner, server, CAN counters, and bus.
- Displays information regarding the status of the DN card, scanner module, and application kernel.
- Displays the host interface memory block for a DN card.
- Displays the configuration information for the master, server, and devices on a DN network.
- Displays and allows changes to the I/O data for the server and devices on a DN network.
- Allows sending explicit messages to devices on a DN network.

Ordering Information

SAP Material Number	Catalog Number	Product Description
Not required	SST-DN3-DIA [†]	DeviceNet Diagnostic Tool
1120300007	SST-DN3-CNF-U	DeviceNet Software Console with USB Key (includes Network Analyzer)
1120300006	SST-DN3-CNF-P	DeviceNet Software Console with Parallel Port Key (includes Network Analyzer)
1120270014	SST-DN3-OPC	OPC Data Server Software (must purchase at least one SST- DN3-CNF)
SST Software Tools for DeviceNet require one of the following interface cards:		
1120030013	SST-DN3-PCU-1	DeviceNet card, Universal PCI bus (3.3V / 5V), 1 channel
1120030018	SST-DN3-PCU-2	DeviceNet card, Universal PCI bus (3.3V / 5V), 2 channel
1120050016	SST-DN3-104-1	DeviceNet card, PC/104, 1 channel
1120050024	SST-DN3-104-2	DeviceNet card, PC/104, 2 channels

[†] Included with SST-DN3 interface cards

To contact us: www.woodhead.com

Reference Number: DW200589 Date Published: December 2008

North America: US: + 1 800 225 7724 – Canada: +1 519 725 5136

Europe: France: +33 2 32 96 04 20 – Germany: +49 7252 94 96 0– Italy: +39 010 59 30 77 – United Kingdom: +44 1495 356300

Asia: Shanghai, China: +86 21-5835-9885 - Tianjin, China: +86 22-23321717

Singapore: +65 6268-6868 – Yamato, Japan: +81 46-265-2428 – Nagoya, Japan: +81 52-221-5950

Brad is a registered trademark and BradCommunications and SST are trademarks of Molex Incorporated.
© 2008 Molex