



Woodhead's SST™ Profibus Interfaces provide high-performance control and the support required for your Profibus applications.

23 Jun. 09  
DW200577

## SST™ VME Interface Card

For Controlling and Monitoring Profibus Applications

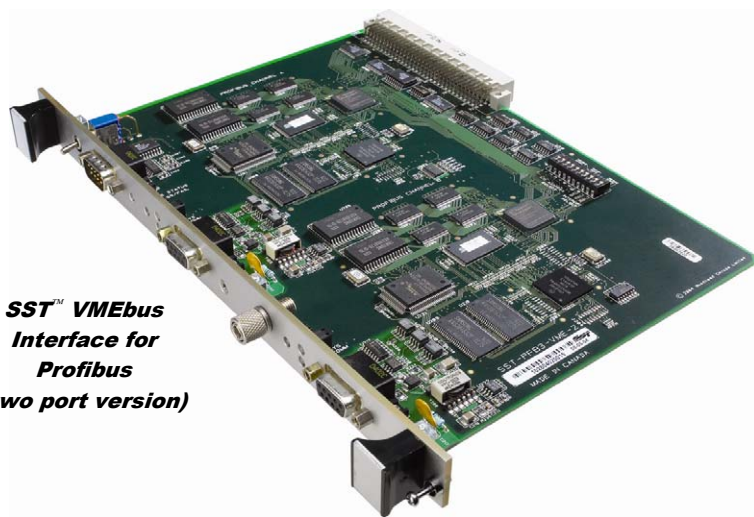
### Features

- Simultaneous execution of Profibus DP Master, DP Slave and FDL (layer 2)
- Manages PROFIBUS DP-V1 services
- Supports all standard Profibus baud rates: 9.6 Kbaud to 12 Mbaud
- Supports 16-bit transfers (VME D16) with both VME A24 (standard) and A16 (short I/O) address transfers
- Two versions of network interface cards provide the option of connecting to one or two independent Profibus networks
- Diagnostic LEDs for system status, watchdog timeout, and communications status

### OS and Drivers Supported

#### Standard Package

- DP Configuration software for off-line configuration
- Custom driver development software
- Sample code and Microsoft Windows 32-bit kernel drivers



*SST™ VMEbus  
Interface for  
Profibus  
(two port version)*

### Product Overview

The SST™ Profibus interface card connects your VMEbus computer to Profibus DP-V0, DP-V1 and FDL (layer 2) networks. It provides high-speed deterministic communication between automation systems and their decentralized peripherals.

The SST™ Profibus VME interface card connects the following to Profibus:

- VME based programmable controllers
- VME based motion controllers
- VME based computers

The SST™ Profibus VME interface card interfaces with the host processor through shared dual ported memory. A fully documented host memory interface is provided. The card does not require external libraries, which simplifies custom driver development in your chosen operating system. DOS example programs with C source are included with each card to assist you with your software development.

### Configuration Tool

The PROFIBUS Console is an optional Windows-32-bit application, which supports the off-line commissioning of PROFIBUS DP-V0 and DP-V1 networks.

Very intuitive, the Drag & Drop user interface of the console provides a simple setup by using the PROFIBUS GSD files supplied by the manufacturer of the field devices. All configuration files will be downloaded later to the SST™ Profibus VMEbus card via the serial port.



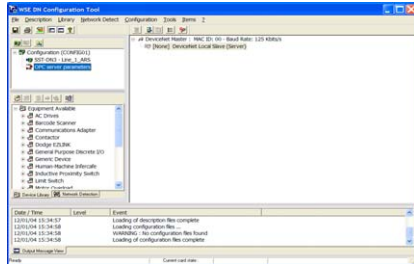
Member of the  
PROFIBUS International.

# SST™ VME Interface Card



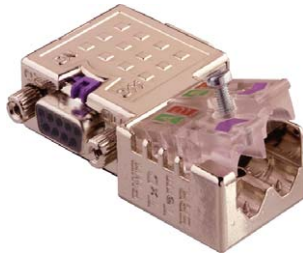
## Software Tools

Software available for the SST™ Profibus Interface Cards enables fast integration of industrial communication into your application.



Configuration console for Off-line Configuration

## Related products



**Brad Harrison® PROFIBUS Diagnostic Plug 90°**  
Part number : PA9D01-42

**Brad Harrison® PROFIBUS Diagnostic Plug 0°**  
Part number : MA9D01-42

## Network Specifications

|                  |   |
|------------------|---|
| <b>Protocol</b>  | <ul style="list-style-type: none"> <li>Profibus Master DP-V0, Class 1 and Class 2</li> <li>Profibus Slave DP-V0</li> <li>PROFIBUS Master DP-V1, Class 1 and Class 2</li> <li>FDL Layer 2</li> </ul> |
| <b>Data Rate</b> | <ul style="list-style-type: none"> <li>All Profibus data rates up to 12Mbps</li> </ul>  |
| <b>Cable</b>     | <ul style="list-style-type: none"> <li>Belden 3079A</li> <li>Brad Harrison® 85-0001 PVR2 conductor with shield, UL-listed</li> </ul>  |
| <b>Connector</b> | <ul style="list-style-type: none"> <li>DB9 female connector per port/channel</li> <li>Brad Harrison Diagnostic D-Sub connector part number: MA9D01-42</li> </ul>                                    |
| <b>Isolation</b> | <ul style="list-style-type: none"> <li>1000 V</li> </ul>  |

## Hardware Specifications

|                              |  |
|------------------------------|--|
| <b>Bus Interface</b>         | VME Spec VME54-compliant (Vita 1.1 1997)   |
| <b>Processor</b>             | ColdFIRE 5272  |
| <b>Memory</b>                | Minimum 256K Window in host memory map   |
| <b>Diagnostics</b>           | LEDs for system status, watchdog timeout, communications status  |
| <b>Interruption</b>          | DIP Switch selectable level IRQ 1 through 7 or none  |
| <b>Dimensions</b>            | Double-height (6U) module  |
| <b>Typical Current Draw</b>  | +5V +/- 5%<br>1-port / channel card: 800 mA<br>2-port / channel card: 1400 mA  |
| <b>Voltage Requirements</b>  | 5V   |
| <b>Resources</b>             | Memory: 256K x 16-bit window per port / channel, located anywhere in VME standard space<br>I/O: 32-byte range per port / channel, located on a 1k boundary determined by the DIP switch settings |
| <b>Operating Temperature</b> | 0° C (32° F) up to +60° C (140° F)   |
| <b>Storage Temperature</b>   | -40° C (-40° F) up to +85° C (185° F)  |
| <b>Humidity</b>              | 5% to 90% non-condensing   |

## Ordering Information

| Part Number          | SAP        | Product description                             |
|----------------------|------------|---|
| <b>SST-PB3-VME-1</b> | 1120140004 | SST™ Profibus card, VMEbus, 1 port channel      |
| <b>SST-PB3-VME-2</b> | 1120140005 | SST™ Profibus card, VMEbus, 2 port channels     |
| <b>SST-PB3-CNF-P</b> | 1120300008 | Configuration Console Application, parallel key |
| <b>SST-PB3-CNF-U</b> | 1120300009 | Configuration Console Application, USB key      |

Other related products: IP67/IP20 Profibus I/O devices, gateway solutions, cable assemblies, diagnostic tools, network interfaces.